



SKYAIR SERIES SINGLE-ZONE HEATING AND COOLING SYSTEMS



Up to 18.6 SEER / Up to 10.4 HSPF / Up to 13 EER
INVERTER, VARIABLE-SPEED COMPRESSOR



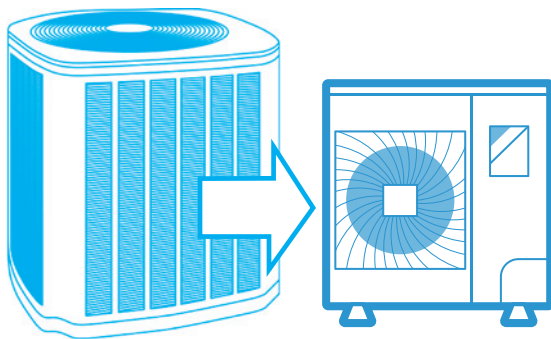
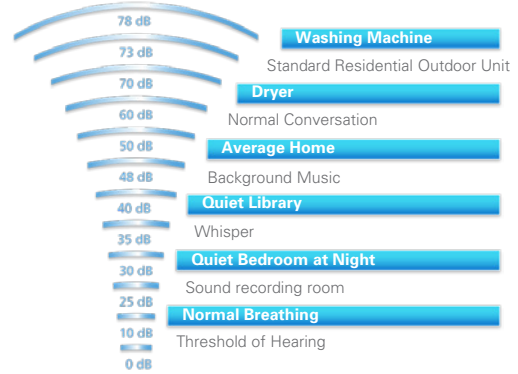
Feel the difference

Designed for absolute comfort, Daikin's SkyAir units are equipped with comfort control features such as the powerful dual air flaps, vertical auto swing functions, 360° airflow and additional optional air filters. Integrated into a high energy efficient system, SkyAir delivers absolute comfort with energy-saving capabilities.

Hear the difference

Utilizing inverter technology to maintain comfort settings, Daikin systems most often operate at low speeds with indoor sound levels as low as 28 decibels (dB) and outdoor sound levels as low as 57 dB.

Sound levels as low as:



See the difference

A Daikin inverter-ducted system is designed for installation where space is limited, such as with zero lot lines, or limited to roof, wall or terrace areas. The compact and lightweight design, when compared to traditional solutions allows the Daikin inverter-ducted system to be used in homes with the strictest of limitations with relative ease.

**100% heating capacity at -4°F
Up to 3 tons (heat pump only)**



Single fan drain pan

Double fan drain pan

New drain pan

Newly designed drain pan on outdoor unit to help prevent condensate from freezing and causing damage to the fan and coil.

VARIABLE REFRIGERANT TEMPERATURE — VRT

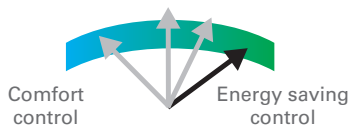
VRT mode control selection to match user preferences

These charts reflect the operation trend of a SkyAir system when in normal operation and under VRT control. Actual energy savings through VRT vary based on the building location, load characteristics, occupancy and system usage conditions.



A view of the various VRT modes of operation:

Automatic mode (Default setting on SkyAir)



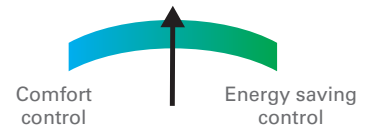
The perfect balance:
Energy saving control throughout most of the year.
Maximum comfort control on the hottest and coldest days of the year.

High sensible mode



Year round energy saving control.
Ideal for dryer climates.

Basic mode (Previous SkyAir System)



Quick reaction to peak load
to maintain set point.



Comfort

We offer a wide range of products, and always provide you with the ideal solution, whether for an apartment, condo or a house. Our units are whisper quiet and, with their specially designed airflow pattern, they create your ideal indoor climate.

Daikin units are designed to include features that let you create your own unique ecosystem. From the wide-angle louver design to the auto-swing and comfortable mode controller settings, effective heating and cooling is ensured throughout the space.

Smart inverter technology

Integrated with an inverter variable-speed compressor, Daikin systems deliver the capacity required to maintain desired room conditions, typically reducing energy consumption by up to 30% or more (compared to traditional fixed-speed ducted systems). This technology minimizes temperature fluctuations and provides continuous cooling and heating comfort.

Energy efficiency

Our products are designed to be highly efficient all year round, and their low energy consumption is reflected in low energy bills for you.

Flexibility

With space saving design, wide operation range and long pipe lengths you have maximum flexibility in your design to suit your needs.

Reliability

Daikin products are renowned for their reliability. And you can rely on service to match, with industry leading warranties.*



* Complete warranty details available from your local dealer or at www.daikincomfort.com.

FAQ Series Wall-Mount

18,000 – 24,000 BTU/h (*Heat Pump or Cooling Only*)

- » Up to 17.6 SEER | Up to 8.4 HSPF
- » Vertical auto-swing function ensures efficient air distribution
- » Removable front panel for easy cleaning
- » Mold-resistant, washable filters



SkyAir FAQ
Wall Mount

FTQ Series Multi-Positional Air Handler

18,000 – 48,000 BTU/h (*Heat Pump or Cooling Only*)

- » Up to 16.0 SEER | Up to 10.4 HSPF
- » Low ambient heat operation down to -4° F
- » Upflow, downflow, horizontal left, or horizontal right configurations
- » Field-installed electric heat options available from 3 kW to 19 kW



SkyAir FTQ
Multi-Positional
Air Handling Unit

FCQ Series Roundflow Sensing Cassette

18,000 – 48,000 BTU/h (*Heat Pump or Cooling Only*)

- » Up to 18.6 SEER | Up to 10.2 HSPF
- » 23 configurable airflow patterns ensure ideal airflow distribution
- » 360° airflow reduces draft
- » Optional self-cleaning filter panel

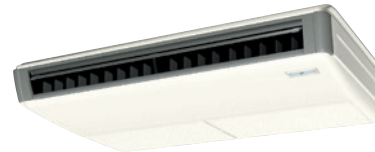


SkyAir FCQ
Ceiling Cassette

FHQ Series Ceiling-Suspended Units

18,000 – 42,000 BTU/h (*Heat Pump or Cooling Only*)

- » Up to 16.6 SEER | Up to 9.3 HSPF
- » Ideal for hallways, apartments, class rooms, churches



SkyAir FHQ
Ceiling Suspended

FBQ Series DC Duct Concealed

18,000 – 48,000 BTU/h (*Heat Pump or Cooling Only*)

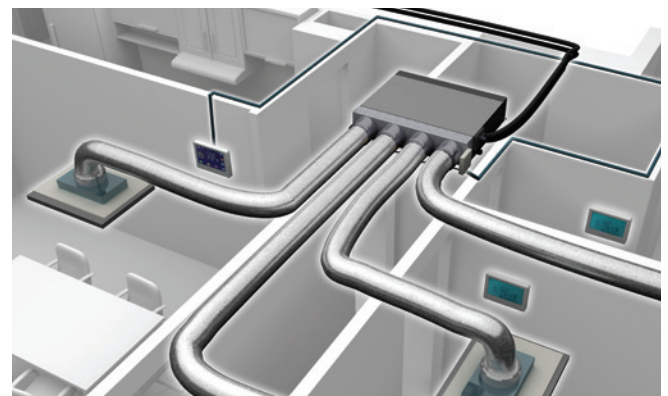
- » Up to 16.7 SEER | Up to 9.7 HSPF
- » Three user selected fan speeds available plus fan “Auto” logic
- » Built-in condensate pump
- » Bottom access for easy service



SkyAir FBQ
DC Duct-Concealed



- » Increases the flexibility of the SkyAir systems in both residential and commercial applications by adding a Zoning Box to an FBQ Series fan coil
- » Allows several separate ducts to supply air to different individually-controlled zones
- » The DZK BACnet® Interface will work with any BACnet®/IP compatible Building Management System





About Daikin:

Daikin Industries, Ltd. (DIL) is a global Fortune 1000 company which celebrated its 90th anniversary in May 2014. The company is recognized as the largest HVAC (Heating, Ventilation, Air Conditioning) manufacturers in the world. DIL is primarily engaged in developing indoor comfort systems and refrigeration products for residential, commercial and industrial applications. Its consistent success is derived, in part, from a focus on innovative, energy-efficient and premium quality indoor climate and comfort management solutions.



WARNINGS:

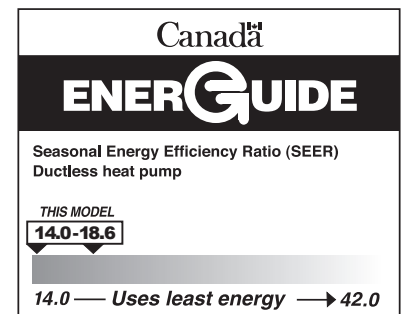
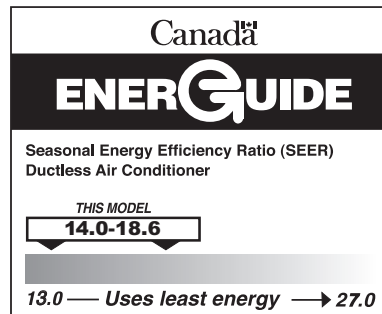
- » Always use a licensed installer or contractor to install this product. Do not try to install the product yourself. Improper installation can result in water or refrigerant leakage, electrical shock, fire or explosion.
- » Use only those parts and accessories supplied or specified by Daikin. Ask a licensed contractor to install those parts and accessories. Use of unauthorized parts and accessories or improper installation of parts and accessories can result in water or refrigerant leakage, electrical shock, fire or explosion.
- » Read the User's Manual carefully before using this product. The User's Manual provides important safety instructions and warnings. Be sure to follow these instructions and warnings.
- » For any inquiries, contact your local Daikin sales office.



ADDITIONAL INFORMATION

Before purchasing this appliance, read important information about its estimated annual energy consumption, yearly operating cost, or energy efficiency rating that is available from your retailer

Daikin and its design are trademarks owned by Daikin.



Our continuing commitment to quality products may mean a change in specifications without notice.
© 2019 **DAIKIN NORTH AMERICA LLC** · Houston, Texas · USA · www.daikincomfort.com or www.daikinac.com

CB-SKYHPAC_01-19